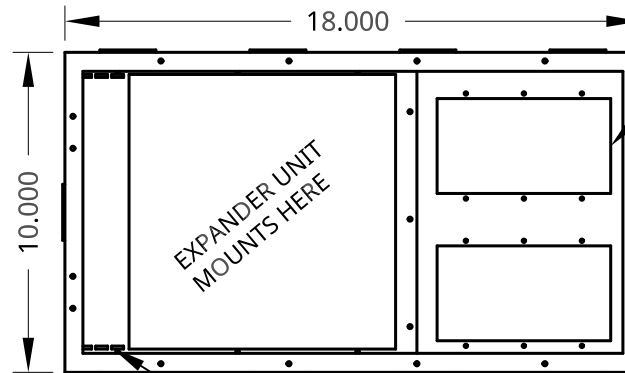
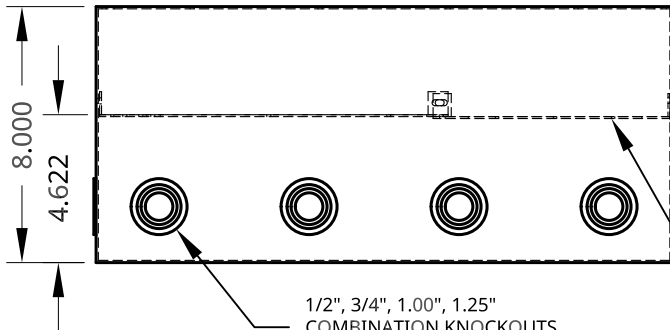
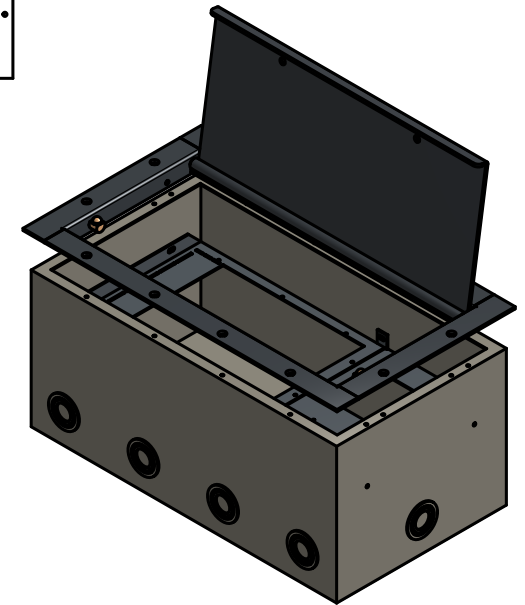
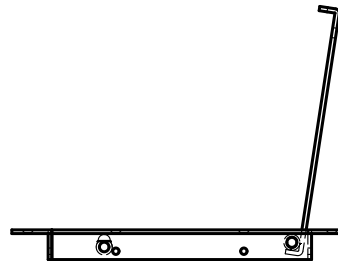
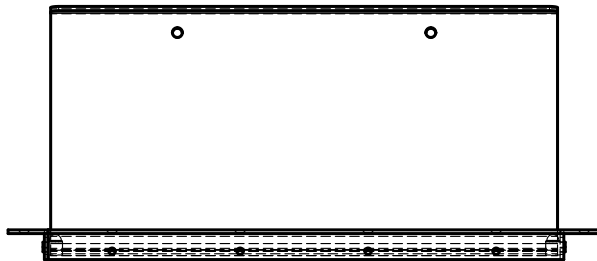


3/4" SLOT OPENING/CLOSURE
ACROSS FRONT OF LID.

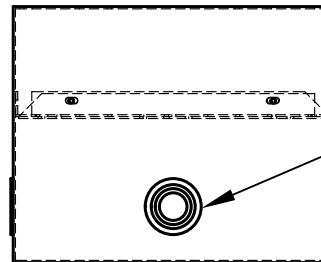


(2) 3-GANG OPENINGS

PERFORATED EDGES MUST BE
CUT TO MOUNT DiGiCo DEVICE.



1/2", 3/4", 1.00", 1.25"
COMBINATION KNOCKOUTS.
4 PLACES TYPICAL ON OPPOSING SIDES.



BRACKET PLACEMENT PROVIDES AMPLE
CABLE END CLEARANCE AND ACCESS TO
POWER SUPPLY THROUGH KNOCKOUTS.

1/2", 3/4", 1.00", 1.25"
COMBINATION KNOCKOUTS.
2 PLACES TYPICAL ON OPPOSING SIDES.

MATERIALS: LID/BEZEL: 11 GA CRS BACK BOX: 14 GA CRS BRACKETS: 16GA CRS	FINISH: LID/BEZEL: TEXTURED BLACK POWDER COAT BACK BOX: ZINC COATED BRACKETS: BLACK POWDER COAT					
	DRAWN BY: JM	DATE: 11/06/2018	REV. 1	SIZE A	SCALE 1:6	SHEET 1 of 1



ACE BACKSTAGE CO., INC. - STAGE POCKET SYSTEMS
www.acebackstage.com - 661.295.5760

PART NUMBER: **174SLBK**

DESCRIPTION:
STAGE POCKET FOR MOUNTING OF ALLEN &
HEATH DX164-W OR DiGiCo A164 EXPANDER UNIT
AND (2) 3-GANG SIZE PANELS/DEVICES. INCLUDES
(1) SET OF MOUNTING EARS SPECIFIC TO
EXPANDER UNIT.