

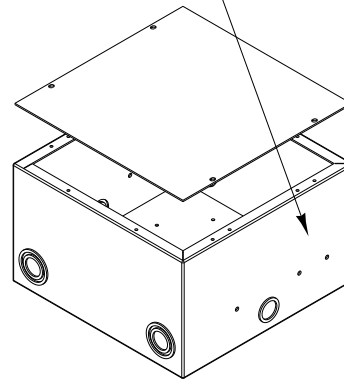
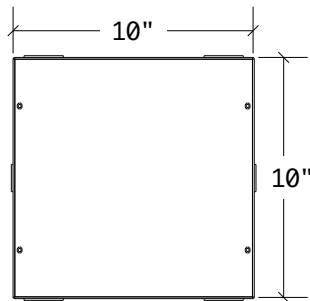


VERTICAL SLANT PANEL

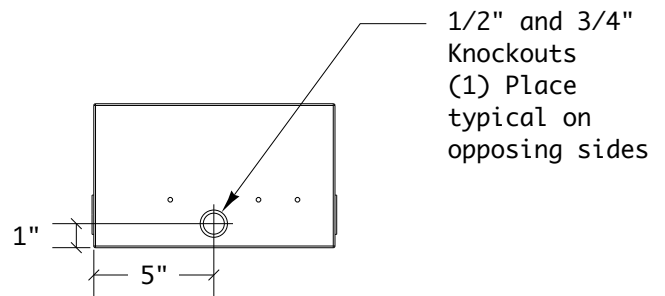
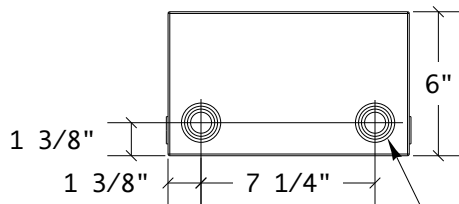
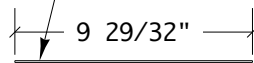
REVISIONS

ZONE	REV	DESCRIPTION	DATE	APPROVED
------	-----	-------------	------	----------


1/16" Thick layer of Polyurethane Encapsulates all 4 sides and bottom



14 Gauge Steel Disposable Protective Cover



1/2", 3/4", 1", and 1-1/4" Knockouts (2) Places typical on opposing sides

<p><i>ALL DIMENSIONS ARE FOR REFERENCE ONLY. UNLESS OTHERWISE SPECIFIED ALL DIMENSIONS ARE IN INCHES.</i></p>	APPROVALS		DATE	 <p>ACE BACKSTAGE CO., INC. - STAGE POCKET SYSTEMS 24846 Avenue Rockefeller • Suite 200 • Valencia, CA 91355 Tel: 661-295-5760 • Fax: 661-295-1122 • Web: www.acebackstage.com</p>	
	DRAWN		04/22/08		
	ENGINEER				
TREATMENT	CHECKED			TITLE	
FINISH	APPROVED			<p>#102BBXW FULL STAGE POCKET BACK BOX WITH POLYURETHANE ENCAPSULATION</p>	
SIMILAR TO	MARKING SYMBOL	ISSUED		SIZE: A DWG NO. 102BBXW.pdf	REV
			SCALE: 1:8	POLYURETHANE FULL BACK BOX	SHEET 1 OF 1

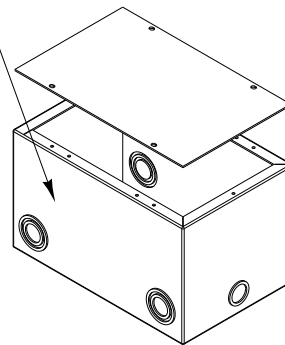
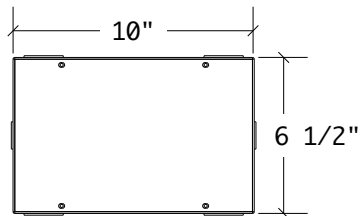


VERTICAL SLANT PANEL

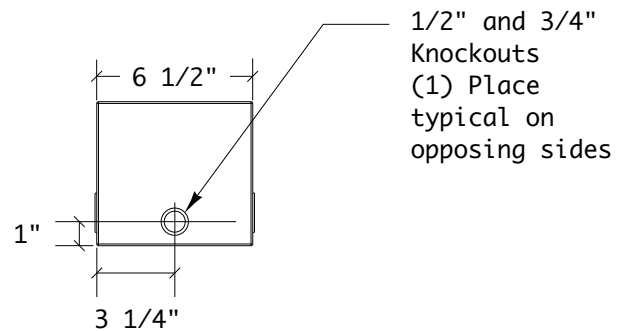
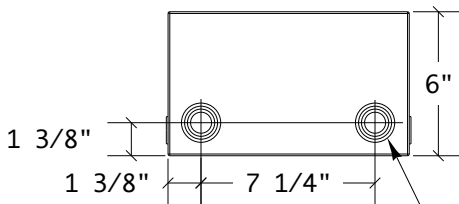
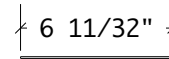
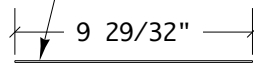
REVISIONS

ZONE	REV	DESCRIPTION	DATE	APPROVED
------	-----	-------------	------	----------

1/16" Thick layer of Polyurethane Encapsulates all 4 sides and bottom



14 Gauge Steel Disposable Protective Cover



1/2", 3/4", 1", and 1-1/4" Knockouts (2) Places typical on opposing sides

<p><i>ALL DIMENSIONS ARE FOR REFERENCE ONLY. UNLESS OTHERWISE SPECIFIED ALL DIMENSIONS ARE IN INCHES.</i></p>	APPROVALS		DATE	<p>ACE BACKSTAGE CO., INC. - STAGE POCKET SYSTEMS 24846 Avenue Rockefeller • Suite 200 • Valencia, CA 91355 Tel: 661-295-5760 • Fax: 661-295-1122 • Web: www.acebackstage.com</p>		
	DRAWN		04/22/08			
	ENGINEER					
TREATMENT	CHECKED			TITLE		
FINISH	APPROVED			<p>#103BBXW HALF STAGE POCKET BACK BOX WITH POLYURETHANE ENCAPSULATION</p>		
SIMILAR TO	MARKING SYMBOL	ISSUED		SIZE	DWG NO.	REV
				A	103BBXW.pdf	
			SCALE: 1:8	POLYURETHANE HALF BACK BOX		SHEET 1 OF 1

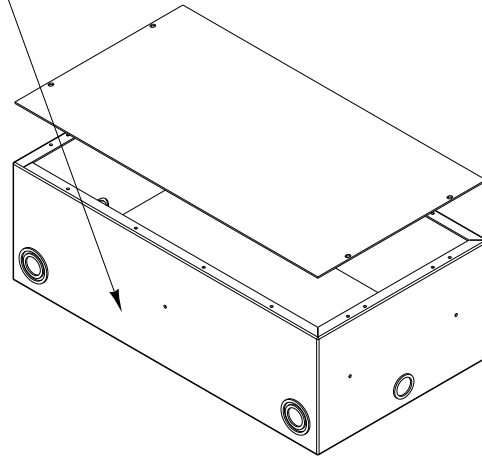
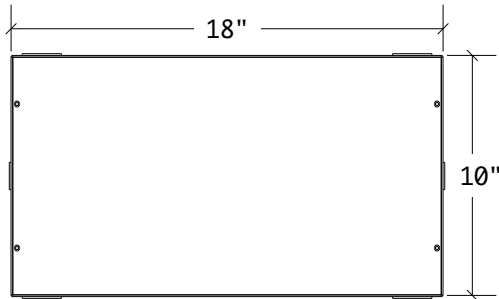


VERTICAL SLANT PANEL

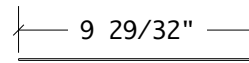
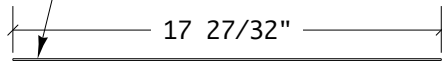
REVISIONS

ZONE	REV	DESCRIPTION	DATE	APPROVED
------	-----	-------------	------	----------

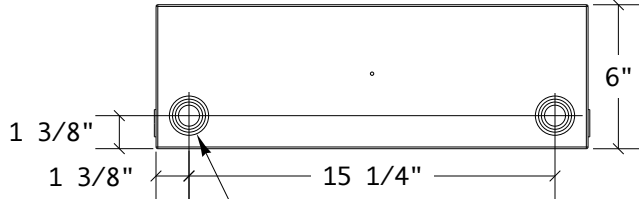
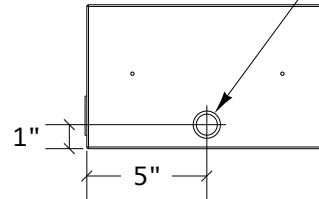
1/16" Thick layer of Polyurethane Encapsulates all 4 sides and bottom



14 Gauge Steel Disposable Protective Cover



1/2" and 3/4" Knockouts (1) Place typical on opposing sides



1/2", 3/4", 1", and 1-1/4" Knockouts (2) Places typical on opposing sides

<p>ALL DIMENSIONS ARE FOR REFERENCE ONLY. UNLESS OTHERWISE SPECIFIED ALL DIMENSIONS ARE IN INCHES.</p>	<p>APPROVALS</p>		<p>DATE</p>	<p>ACE BACKSTAGE CO., INC. - STAGE POCKET SYSTEMS 24846 Avenue Rockefeller • Suite 200 • Valencia, CA 91355 Tel: 661-295-5760 • Fax: 661-295-1122 • Web: www.acebackstage.com</p>	
	<p>DRAWN</p>		<p>04/22/08</p>		
	<p>ENGINEER</p>		<p>TITLE</p>		
<p>TREATMENT</p>	<p>CHECKED</p>		<p>#104BBXW DOUBLE WIDE STAGE POCKET BACK BOX WITH POLYURETHANE ENCAPSULATION</p>		
<p>FINISH</p>	<p>APPROVED</p>		<p>SIZE A</p>	<p>DWG NO. 104BBXW.pdf</p>	<p>REV</p>
<p>SIMILAR TO</p>	<p>MARKING SYMBOL</p>	<p>ISSUED</p>	<p>SCALE: 1:8</p>	<p>POLYURETHANE DOUBLE WIDE BACK BOX</p>	<p>SHEET 1 OF 1</p>